



BAYTECH

CORPORATION

A LANDIRENZO COMPANY

Jed Tallman
jtallman@landiusa.com
303-868-7404

World's largest alternative fuel system supplier!

- Over 40% worldwide market share in alternative fuel vehicle systems
- Over **1.2 Million systems** shipped last year

- Founded in 1953
- Headquartered in Cavriago, Italy





LANDIRENZO
USA

Presence in over 50 countries with 11 subsidiaries

- Product presence
- Distribution
- Assembly, testing, and packaging

Italy



Netherlands



Poland



Romania

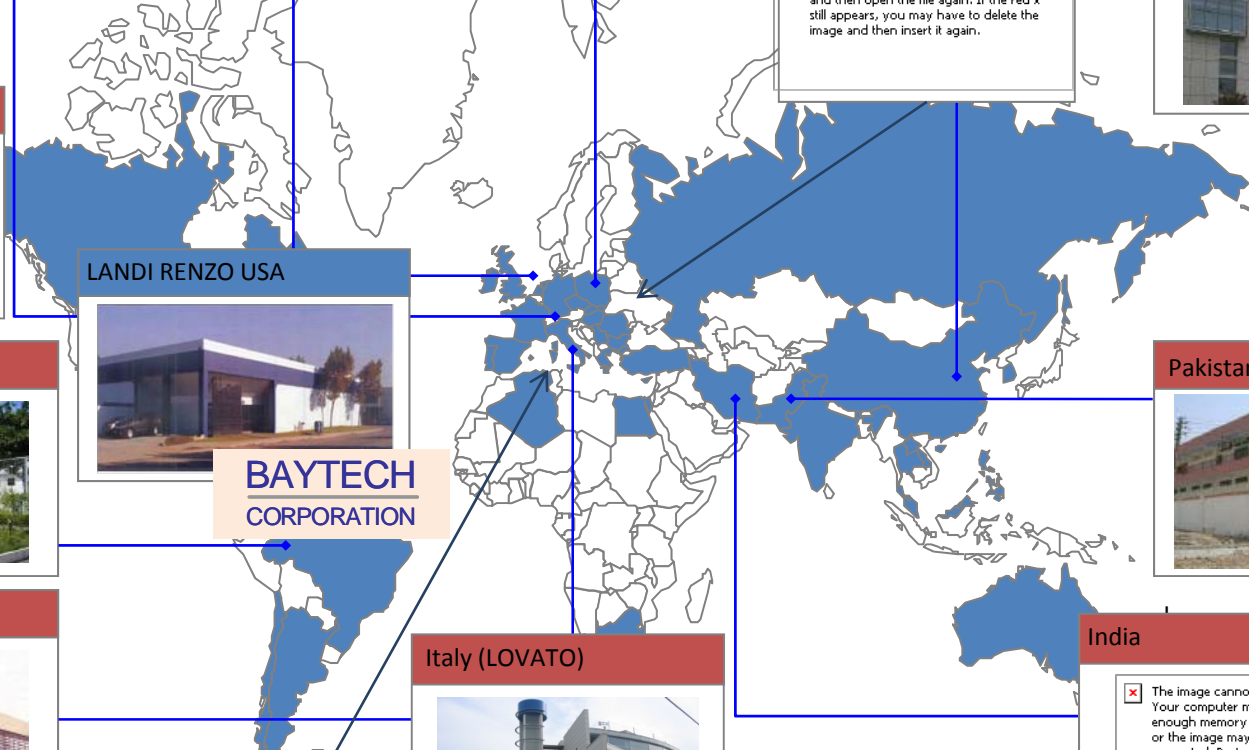
✘ The image cannot be displayed. Your computer may not have enough memory to open the image, or the image may have been corrupted. Restart your computer, and then open the file again. If the red x still appears, you may have to delete the image and then insert it again.

China



Venezuela

✘ The image cannot be displayed. Your computer may not have enough memory to open the image, or the image may have been corrupted. Restart your computer, and then open the file again. If the red x still appears, you may have to delete the image and then insert it again.




LANDI RENZO USA



BAYTECH CORPORATION

Brazil



Pakistan



Italy (MED)



AEB TECHNOLOGIES

Italy (LOVATO)



India

✘ The image cannot be displayed. Your computer may not have enough memory to open the image, or the image may have been corrupted. Restart your computer, and then open the file again. If the red x still appears, you may have to delete the image and then insert it...

INDIA



Mercedes-Benz
PSA PEUGEOT CITROËN



RENAULT



Group



Group



Daring to Innovate



Irisbus



CHRYSLER



Mercedes-Benz

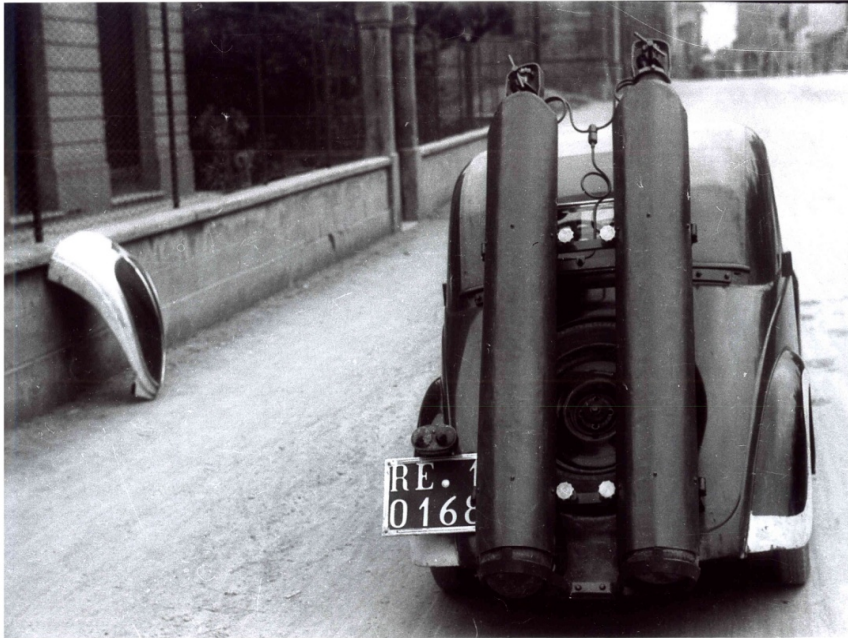


Mahindra & Mahindra



Ashok Leyland

5% of revenues are reinvested
in research and development



U.S. Upfit options

- Installation at our Torrance , CA facility
- Installation at one of our Baytech certified installers
- Upfits available utilizing OEM “Ship thru” processes in conjunction with our partners Leggett & Platt and Knapheide Manufacturing
 - Ship thru process also provides for additional upfit options (Racks , Bins, Etc.)



Aftersales

- 3 years/50K comprehensive Warranty
- 8 years/80K on emissions components
- Training provided for end users, maintenance, and repair facilities
- Technical helpline
- On site diagnostic assistance available

GMC Savana & Chevrolet Express

Available Trims:

- 2500 Passenger and Cargo
- 3500 Passenger and Cargo



2500

	6.0 Vortec V8	6.0 Vortec V8
Engine	6.0 Vortec V8	6.0 Vortec V8
Manufacturer Stated Horsepower	323 @ 4600 RPM 373 ft-lb torque @ 4400 RPM	323 @ 4600 RPM 373 ft-lb torque @ 4400 RPM
Manufacturer Stated MPG (City/Highway)	10/16 Cargo 11/16 Passenger	10/16 Cargo 11/16 Passenger
Max GVWR (lbs)	8600	9600
Approximate Fuel Capacity (Three Tanks)	16 Equivalent Gallons	16 Equivalent Gallons
Approximate Fuel Capacity (Four Tanks)	23 Equivalent Gallons	23 Equivalent Gallons

On sale date Q1 2011

GMC Sierra & Chevrolet Silverado

Available Trims:

- 2500HD Pickup and Chassis Cab
- 3500HD Pickup and Chassis Cab



	2500HD	3500HD
Engine	6.0 Vortec V8	6.0 Vortec V8
Manufacturer Stated Horsepower	360 @ 5400 RPM 380 ft-lb torque @ 4200 RPM	360 @ 5400 RPM 380 ft-lb torque @ 4200 RPM
Manufacturer Stated MPG (City/Highway)	12/19	12/19
Max GVWR (lbs)	9200	9900
Approximate Fuel Capacity	21/24 Equivalent Gallons	21/24 Equivalent Gallons

On sale early Q3 2011

GMC Savana & Chevrolet Express Cutaway



Available Trims:

- 3500 Cutaway
 - 4500 Cutaway
- (Also Available in Propane)**



3500

4500

	3500	4500
Engine	6.0 Vortec V8	6.0 Vortec V8
Manufacturer Stated Horsepower	323 @ 4600 RPM 373 ft-lb torque @ 4400 RPM	323 @ 4600 RPM 373 ft-lb torque @ 4400 RPM
Manufacturer Stated MPG (City/Highway)	10/16	10/16
Max GVWR (lbs)	10,000	14,200
Approximate Fuel Capacity (Three Tanks)	16 Equivalent Gallons	16 Equivalent Gallons
Approximate Fuel Capacity (Four Tanks)	23 Equivalent Gallons	23 Equivalent Gallons

On sale Q1, 2011

Isuzu NPR HD



Available Trims:

- NPR HD
(Also Available in Propane)



2500



Engine

6.0L 4HK1-TC

Manufacturer Stated
Horsepower

210 @ 2500 RPM
441 ft-lb torque @ 2000 RPM

Manufacturer Stated MPG
(City/Highway)

11/13

Max GVWR (lbs)

14,500

Approximate Fuel Capacity

22 Equivalent Gallons*

* Depending on customer needs and tank placement requirements

On sale Q1, 2011

A solid green grass texture background at the bottom of the page.

Workhorse



Available Trims:

- W42 / W62
(Also Available in Propane)



W42

Engine

6.0L GM Vortec V8

Manufacturer Stated
Horsepower

307 @ 4600 RPM
357 ft-lb torque @ 4400 RPM

Max GVWR (lbs)

14,000 and over

On sale Q1, 2011

Buick Lucerne & Chevrolet Impala

Available Trims:

- Buick Lucerne
- Chevrolet Impala



	Lucerne	Impala
Engine	3.9L	3.5L
Manufacturer Stated Horsepower	323 @ 4600 RPM 373 ft-lb torque @ 4400 RPM	323 @ 4600 RPM 373 ft-lb torque @ 4400 RPM
Manufacturer Stated MPG (City/Highway)	17/27	19/29

On sale early Q3, 2011

Freightliner MT45

Available Trims:

- MT45
(Also Available in Propane)



Freightliner MT45

MT45

Engine

MBE900

Manufacturer Stated
Horsepower

170 @ 2300 RPM
420 ft-lb torque @ 1600 RPM

Max GVWR (lbs)

14,000 and over

On sale Q1, 2011



Ford E-Series



- Available Trims:
- E-Series Passenger
 - E-Series Cargo

	E-250	E-350
Engine	5.4L EFI V8	5.4L EFI V8
Manufacturer Stated Horsepower	255 @ 4500 RPM 350 ft-lb torque @ 2500 RPM	255 @ 4500 RPM 350 ft-lb torque @ 2500 RPM
Manufacturer Stated MPG (City/Highway)	12/15	12/15
Max GVWR (lbs.)	9000	9500
Approximate Fuel Capacity (Three Tanks)	21 Equivalent Gallons	21 Equivalent Gallons
Approximate Fuel Capacity (Four Tanks)	27 Equivalent Gallons	27 Equivalent Gallons



Available as a ship thru From Leggett & Platt CVP



Thank You!